

Make Energy while the sun shines !

Bijlee-Paani™

Stand Alone - Solar AC 3ph. Power for new/existing AC Water Pumps for Irrigation & Building Overhead Water Tanks

Make Energy while the sun shines !



Sterling for Efficient & Economical Solar PV power generation



Our Integrated system includes a Module Mounting Support Structure which is made of **MS hot/cold rolled** section with hot dip galvanization of **above 80 microns**, designed to withstand **wind speed of 200 km/hr**



The components of our designed integrated system for power generation using Solar PV for Existing water pumps on Stand-Alone basis, are **certified by Independent Test houses** with test certificates submitted to the End Users.



Quality is our signature hence We offer **25 years** of life Warranty on Our Designed Integrated Solar system.



Our stand alone Bijlee-Paani Series is useful for water pumping as well as for other pre and post harvest agricultural activities. They come with additional suitable transformers to fulfill all the electrical needs.



We also offer Stand Alone Systems to meet Specific Requirements of our customers, in addition to its use of water pumping.

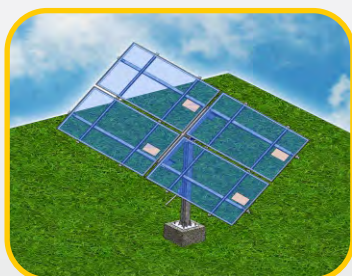


We have trained and dedicated in house technical support team. Our Pan India channel partners provide the necessary on-field support to carry out the installations/comissioning. Our customers enjoy the service support throughout the life span of the systems.

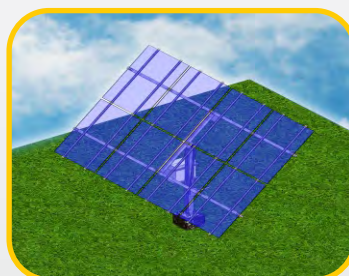


Our System Consist of **250 wp Polycrystalline Solar Panel** and **VFD Based Solar Inverter** for Motor Application.

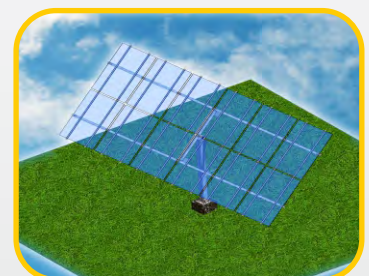
MODEL	UNITS	SES-WP-01	SES-WP-02	SES-WP-03
SOLAR PV PANEL				
Make	-	VIKRAM SOLAR, ELDORA 250 Wpe, 60 CELL POLYCRYSTALLINE		
No of panels per system	Nos	4	8	12
Installed DC Power I/P	Kw	1	2	3
Applicable Pump Capacity	HP	1	2	3
Warranted Life	Years	25		
IEC (Intelligent energy controller)				
Make, Model No.	-	MITRAMAX, LEECH		
IEC	Nos	4	8	12
INVERTER				
Make	-	HITACHI		
Model No.	-	WJ200-007HF	WJ200-015HF	WJ200-022HF
Rated O/P Voltage	V	3 Phase Δ 380 To 480 (Proportional to I/P Voltage)		
AC Protection including Dry Pump Run	-	Yes		
IP Protection	-	IP 54		
Guaranteed Life	Years	5		
Warranted Life	Years	25		
SYSTEM PROTECTION				
Control Panel Unit (Rittal make)	Size (HXWXD)mm	500x500x300		
Installation	-	Outdoor (Mounted on the Pole)		
DC Protection	-	Yes		
Surge Protection	-	Yes		
Earthing	-	Vasudha (HG 39/3)/OBO		
IP Protection	-	IP 55		
System Schematic Diagram	-			
STRUCTURE				
Make	-	STERLING POWERGENSYS LTD		
Model	-	SFS-WPSP-01	SFS-WPSP-02	SFS-WPSP-03
Material	-	MS Hot Rolled/Cold Formed Sections		
Seasonal Tilt North, South Orientation	-	Manual		
Single Axis Daily Tilt East, West Orientation	-	Manual/auto		
Type Of Installation	-	Single Pole Ground Mount		
Protection	-	Hot DIP Galvanized Above 80 Microns		
Wind Load Sustainability	Km/hr	200		
FEA Analysis	-	STAAD-PRO/Nastran		
Guaranteed Life	Years	25		
SUPPLY PRICE				
Total Delivered Price	Rs.	1,20,000/-	1,90,000/-	2,95,000/-
SERVICES				
Supervision Commissioning & Validation	Rs.	Free	Free	Free
OPTIONAL SUPPLY ADD ONS PRICE				
Auto Tracking System Transformer	Rs.			
OPTIONAL PAID SERVICES				
Actual Erection And Services Annual Maintenance Contract	Rs.			
ENERGY GENERATION				
Average Expected Power Generation Per Annum	KWh/year	1,550	3,110	4700



SFS-WPSP-01

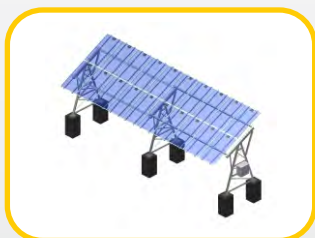


SFS-WPSP-02

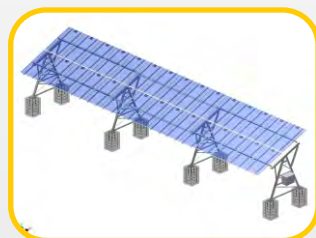


SFS-WPSP-03

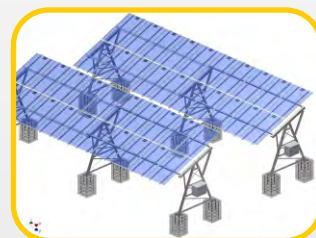
MODEL	UNITS	SES-WP-05	SES-WP-7.5	SES-WP-10	SES-WP-12.5
SOLAR PV PANEL					
Make	-	VIKRAM SOLAR, ELDORA 250 Wpe, 60 CELL POLYCRYSTALLINE			
No of panels per system	Nos	20	30	40	50
Installed DC Power I/P	Kw	5	7.5	10	12.5
Applicable Pump Capacity	HP	5	7.5	10	12.5
Warranted Life	Years	25			
IEC (Intelligent energy controller)					
Make, Model No.	-	MITRAMAX, LEECH			
IEC	Nos	N/A	6	N/A	N/A
INVERTER					
Make	-	HITACHI			
Model No.	-	WJ200-040HF	WJ200-055HF	WJ200-075HF	
Rated O/P Voltage	V	3 Phase Δ 380 To 480 (Proportional to I/P Voltage)			
AC Protection Including Dry Pump Run	-	Yes			
IP Protection	-	IP 54			
Guaranteed Life	Years	5			
Warranted Life	Years	25			
SYSTEM PROTECTION					
Control Panel Unit (Rittal Make)	Size (HXWDX)mm	500x500x300			
Installation	-	Outdoor (Mounted on the Pole)			
DC Protection	-	Yes			
Surge Protection	-	Yes			
Earthing	-	Vasudha (HG 39/3)/OBO			
IP Protection	-	IP 55			
System Schematic Diagram	-				
STRUCTURE					
Make	-	STERLING POWERGENSYS LTD			
Model	-	SFS-WPMP-2.5x2	SFS-WPMP-2.5x3	SFS-WPMP-2.5x4	SFS-WPMP-2.5x5
Material	-	MS Hot Rolled/Cold Formed Sections			
Seasonal Tilt North, South Orientation	-	Manual	Manual	Manual	Manual
Single Axis Daily Tilt East, West Orientation	-	Manual/Auto	Manual/Auto	Manual/Auto	Manual/Auto
Type Of Installation	-	Multi Pole Ground Mount			
Protection	-	Hot DIP Galvanized Above 80 Microns			
Wind Load Sustainability	Km/hr	200			
FEA Analysis	-	STAAD-PRO/Nastran			
Guaranteed Life	Years	25			
SUPPLY PRICE					
Total Delivered Price	Rs.	3,57,000/-	4,80,000/-	6,60,000/-	7,85,000/-
SERVICES					
Supervision Commissioning & Validation	Rs.	Free	Free	Free	Free
OPTIONAL SUPPLY ADD ONS PRICE					
Auto Tracking System Transformer	Rs.				
OPTIONAL PAID SERVICES					
Actual Erection And Services Annual Maintenance Contract	Rs.				
ENERGY GENERATION					
Average Expected Power Generation Per Annum	KWh/year	7,914	11,100	15,200	19,000



SFS-WPMP-2.5X2



SFS-WPMP-2.5X3

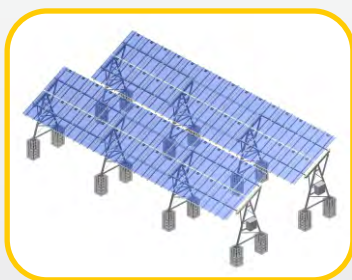


SFS-WPMP-2.5X4

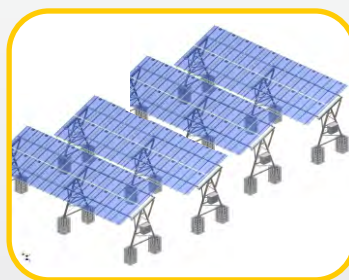


SFS-WPMP-2.5X5

MODEL	UNITS	SES-WP-15	SES-WP-20	SES-WP-25
SOLAR PV PANEL				
Make	-	VIKRAM SOLAR, ELDORA 250 Wp _e , 60 CELL POLYCRYSTALLINE		
No of panels per system	Nos	60	80	100
Installed DC Power I/P	Kw	15	20	25
Applicable Pump Capacity	HP	15	20	25
Warranted Life	Years	25		
INVERTER				
Make	-	HITACHI		
Model No.	-	WJ200-110HF	SJ700-185HF	SJ700-220HF
Rated O/P Voltage	V	3 Phase Δ 380 To 480 (Propositional to I/P Voltage)		
AC Protection Including Dry Pump Run	-	Yes		
IP Protection	-	IP 54		
Guaranteed Life	Years	5		
Warranted Life	Years	25		
SYSTEM PROTECTION				
Control Panel Unit (Rittal Make)	Size (HXWXD)mm	600x760x350		
Installation	-	Outdoor (Mounted on the Pole)		
DC Protection	-	Yes		
Surge Protection	-	Yes		
Earthing	-	Vasudha (HG 39/3/OBO)		
IP Protection	-	IP 55		
System Schematic Diagram	-			
STRUCTURE				
Make	-	STERLING POWERGENSYS LTD		
Model	-	SFS-WPMP-2.5x6	SFS-WPMP-2.5x8	SFS-WPMP-2.5x10
Material	-	MS Hot Rolled/Cold Formed Sections		
Seasonal Tilt North, South Orientation	-	Manual	Manual	Manual
Single Axis Daily Tilt East, West Orientation	-	Manual/Auto	Manual/Auto	Manual/Auto
Type Of Installation	-	Multi Pole Ground Mount		
Protection	-	Hot DIP Galvanized Above 80 Microns		
Wind Load Sustainability	Km/hr	200		
FEA Analysis	-	STAAD-PRO/ Nastran		
Guaranteed Life	Years	25		
SUPPLY PRICE				
Total Delivered Price	Rs.	9,00,000/-	12,06,000/-	14,50,000/-
SERVICES				
Supervision Commissioning & Validation	Rs.	Free	Free	Free
OPTIONAL SUPPLY ADD ONS PRICE				
Auto Tracking System	Rs.			
Transformer	Rs.			
OPTIONAL PAID SERVICES				
Actual Erection And Services	Rs.			
Annual Maintenance Contract	Rs.			
ENERGY GENERATION				
Average Expected Power Generation Per Annum	KWh/year	24,000	31,000	39,000



SFS-WPMP-2.5X6



SFS-WPMP-2.5X8



SFS-WPMP-2.5X12